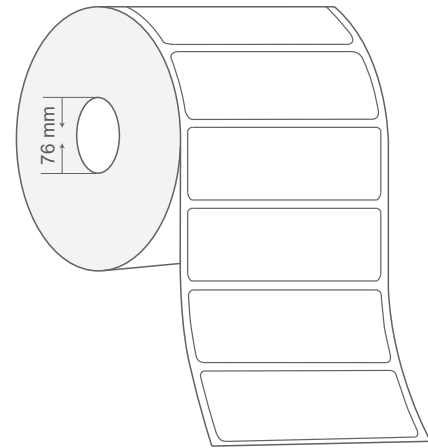


Syndicate Crystal TE Label with security cuts is a non-transferable tamper-evident label for vehicles windshields. Syndicate Crystal TE Label has been developed especially for automatic vehicle identification applications. Supplied in roll form as finished label and it can be encoded and printed with typical RFID printers that are capable of printing labels.

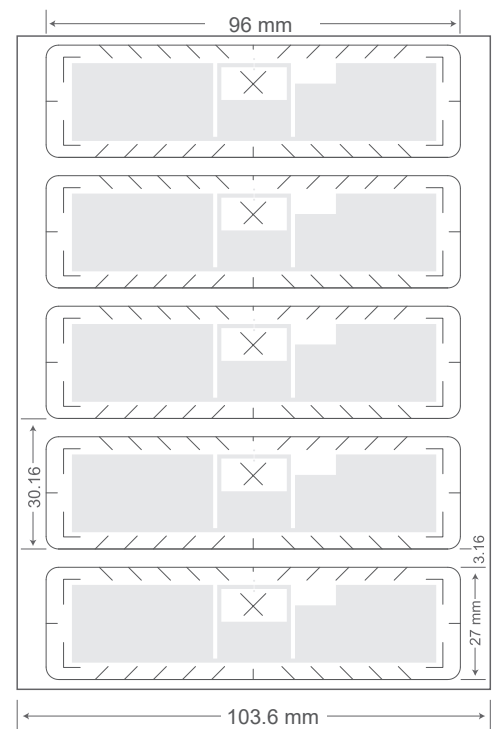
**TYPICAL APPLICATIONS**

- Electronic Toll Collection (ETC)
- Parking Management
- Vehicle Access Control



**PHYSICAL SPECIFICATION**

Face Stock	Printable white PET, resin ribbon is recommended
Label Sizes	96 x 27.0 x 0.2 mm 3.77 x 1.06 x 0.01 in
Adhesive	3M 467MP
Weight	0.80 gms
Delivery format	On reel
No. of Labels/ Reel	2000 pcs
Label Pitch	30.16 mm / 1.19 in
Core inner diameter	76 mm / 3 in



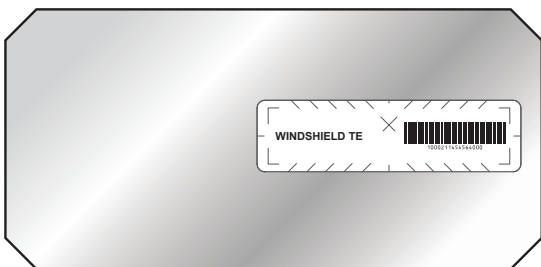
## RF SPECIFICATION

Mode of Operation	Passive
Device type	Class 1 Gen 2 Passive UHF RFID transponder
Air interface protocol	EPC Global Class 1 Gen 2 ISO 18000-6C
Operational frequency	Global 860-960 MHz
IC type*	NXP UCODE G2iM
Memory configuration	EPC Size 256 bit, User Memory 512 bit, 96 bit TID with 48 bit Unique Serial Number
Write cycle endurance	10000
Data Retention	Upto 20 years
Read range (2W ERP)**	ETSI and FCC on Glass up to 10 m / 32 ft
Applicable Surface Materials	Glass

## ENVIRONMENTAL RESISTANCE

Operating Temperature	-30°C to +70°C / -22°F to +158°F
Withstands Exposure To	204°C / 399.2 °F for min/hours 149°C / 300.2 °F for days/weeks
Peak Temperature	204°C / 399.2 °F
Adhesive Service Temperature	-35°C to +70°C / -31°F to +158°F
Recommended Application Temperature	+21°C to +38°C / 60°F to +100°F
Water Resistance	IP67
Chemical Resistance	Resistant to chemical solvents and moisture
Ideal Storage Condition	+21°C / +70°F, 50% RH
Expected Lifetime	Years in normal operating conditions

## PRODUCT INSTALLATION



- Apply between 10°C and 40°C.
- Ensure surfaces to be bonded are thoroughly cleaned, dry and well unified.
- Firm application pressure helps develop better adhesive contact and improves bond strength.

## PERSONALIZATION OPTIONS

### Pre-encoding

- Customer specific encoding of EPC

### Customized Printing

- Customer specific layout including logo & text

## ORDER INFORMATION

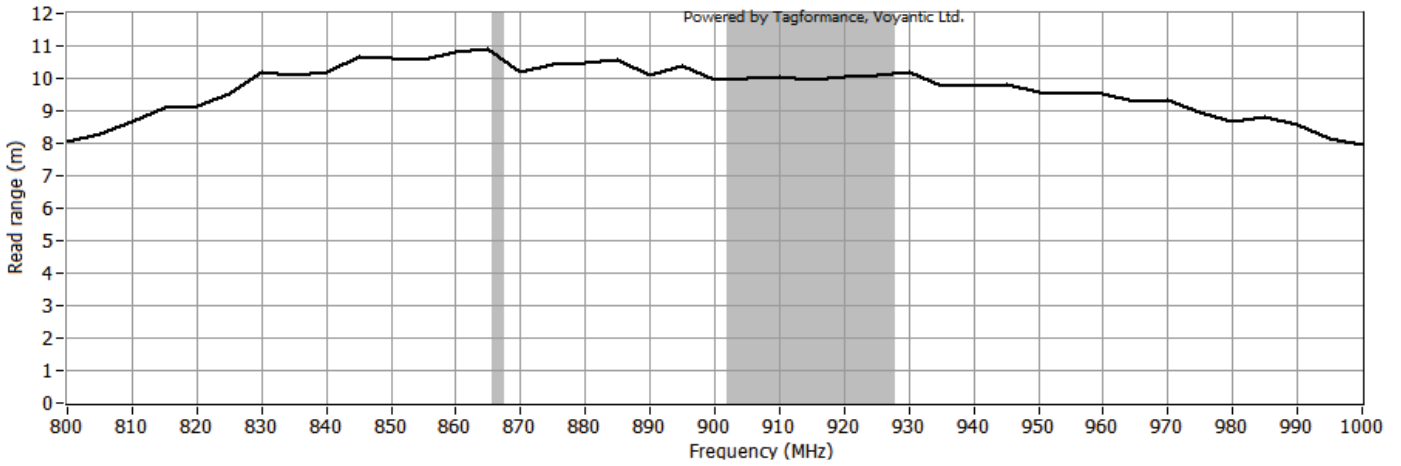
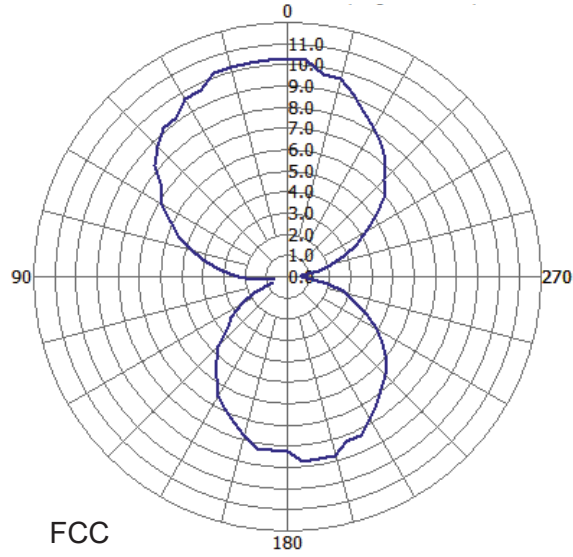
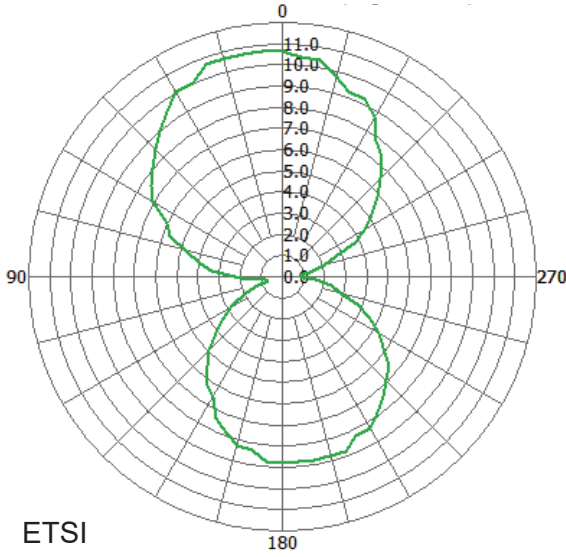
### Part Number

- RF.LI.TT.Crystal.G2iM

### Roll Sizes

- 2000 Labels per Roll / 4 Rolls per Carton

# RADIATION PATTERN & READ RANGE GRAPH



\* Other IC's available on request

\*\* The indicated read range values are measured in our laboratory testing environment, where antennas with optimum directivity are used with maximum allowed operating power. Different surface materials and environments may exhibit different results.



Version : 300419.01